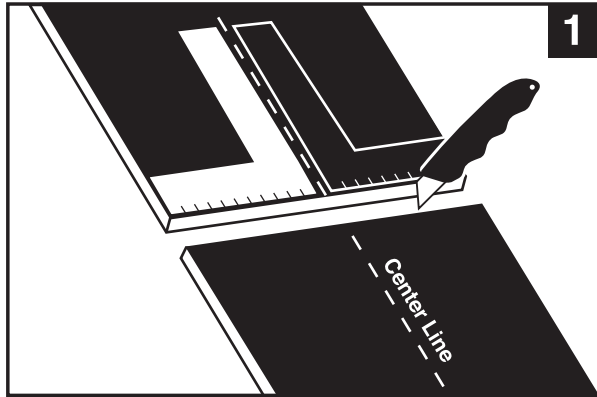
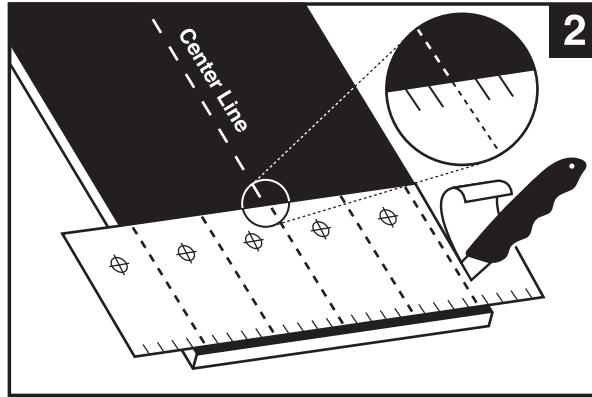


# INSTRUCTIONS FOR USING TEMPLATE TAPE & POWER PUNCH

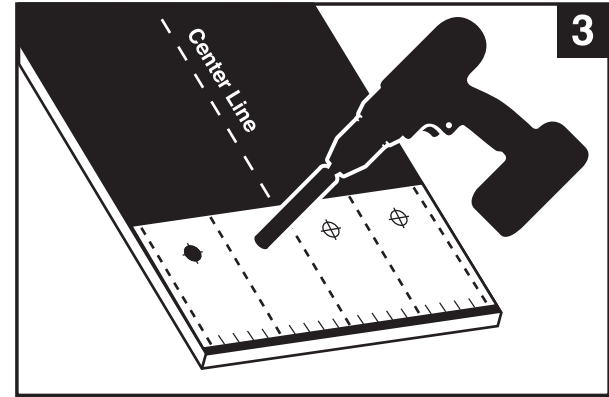
*This template tape for use exclusively for Maxi-Splice ULTRA models.*



1 Square belt. Find and mark center line.



2 Align center line of belt to correct center line on template. Cut template tape to actual belt width.



3 Apply template to belt, taking care to squarely align tape edge to squared belt edge as marked. Punch 5/8" holes using Maxi-Lift Power Punch (drill bits not recommended).

- Read complete instructions before beginning installation of splices. Instructions can be found at [www.maxilift.com](http://www.maxilift.com). As with any belt splice, after installation, continued inspection of the total installation is required or failure can occur.
- Regular inspection of belt splice is required to insure proper function and safety of the splice. Failure to inspect can result in splice failure.
- If reinstalling Maxi-Splices, new nylon insert lock nuts must be used. Replacements are available from Maxi-Lift, Inc.
- Use Maxi-Lift Power Punch to cut holes in belt to avoid unnecessary damage to belting carcass.
- Replacement NBR rubber wedges available from Maxi-Lift.

## **WARNING: DO NOT USE ANY MAXI-SPLICE PRODUCT ON MANLIFTS**

Maxi-Lift, Inc neither solicits nor recommends the use of any Maxi-Splice belt clamp for splicing man lift belts. Any Installation of a Maxi-Splice product for this purpose may cause serious injury or even death. Not to be used on steel cable belts.